

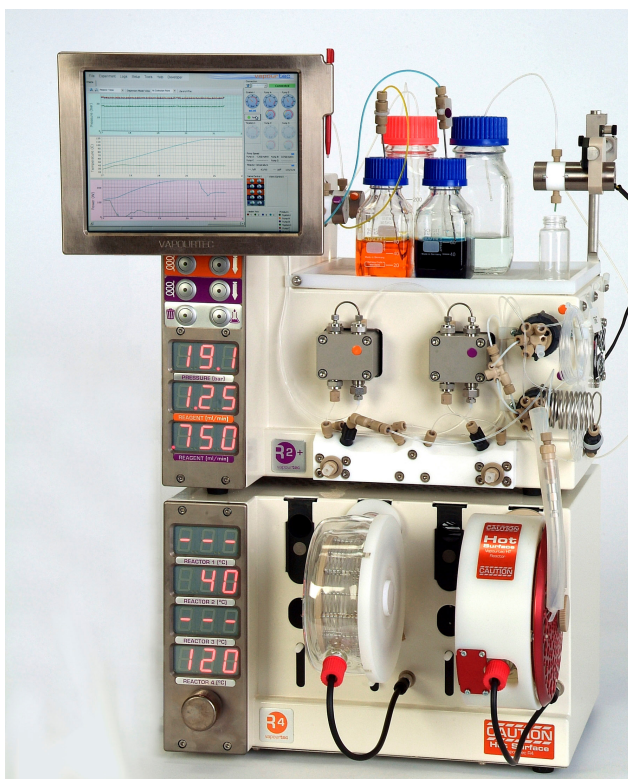
Vapourtec R Series – New User Interface

Separate laptop no longer required !

The Flow Commander™ software offers unparalleled power and flexibility for users wishing to optimise and automate their flow reactions, but for some users the requirement to have a separate laptop adjacent to the flow system to make the most of these capabilities may represent an inconvenience in an already crowded hood.

Now Vapourtec are pleased to announce the new **R Series Flow Commander™** touch screen user interface. This is an embedded UI that sits within the basic R Series footprint, and which offers all the same features as the original PC based system. Customers taking delivery of new systems after November 2009 will have this option available.

The new interface features a colour touch screen, operated by hand or using the stylus provided. For text entry, an on screen keyboard is provided, though a USB keyboard and mouse can be attached if required.



FAQ

Will this “built” in version of Flow Commander™ do all the same things ?

Yes. The software running on it is built on a common code base with the existing Windows version of Flow Commander™.

How big is the screen of the built in display ?

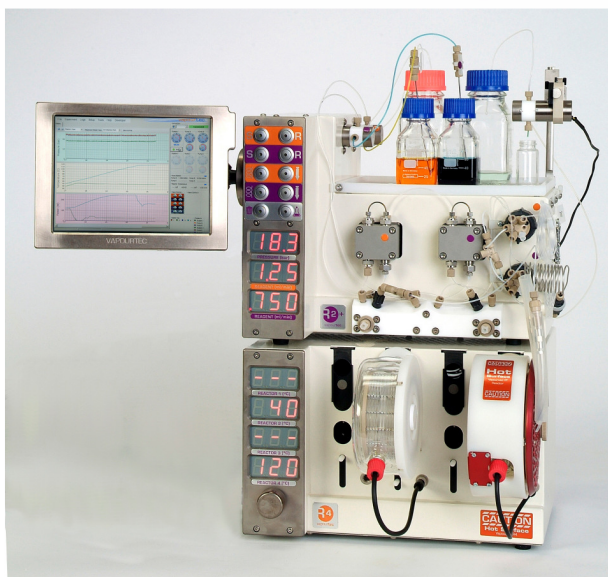
It is a 9 inch screen (corner to corner across the diagonal).

(continued overleaf)

What height does the new display sit at ?

In the normal position (see picture on previous page) it sits at 580mm +/- 50mm.

If this is inconvenient, (it may be partly obscured by the sash on some older fume hoods) it may instead be located to the side of the system, as shown (right) or even on the outside of the fume hood.



Can I still use the front panel controls when running the system in a simple manual fashion ?

Yes, no change there.

So is it the exact original Flow Commander™ interface but on a 9 inch screen ?

Not exactly – though the functionality is the same, the user interface has been modified for use on a smaller touch screen. A pop up “on screen” keyboard is used for text entry, for example.

The interface can be operated with fingers or with the stylus.



Could I plug in an external keyboard and mouse ?

Yes, if required.

Can I still connect Flow Commander™ to my LAN ?

Yes. An Ethernet connection is included.

This will make it possible to do the following:

- Experiments and chart files can be loaded from / saved to a server or Windows workstation elsewhere on the network
- PDF report files can be output to a server or Windows workstation elsewhere on the network
- The system can be viewed or controlled via VNC from a PC elsewhere on the network.

What if I have no Ethernet port in my fume hood

Data can be carried to/from the system on a USB drive.

- Experiments and chart files can be loaded from / saved to a USB drive
- PDF report files can be output to a USB drive

Is this new display now a required part of all R Series Systems ?

No. New users can choose from

- a basic stand alone R Series System with no Flow Commander™ software
- an R Series System with the new built in display and Flow Commander™
- an R Series with no built in display, and Flow Commander™ to use on their own PC next to the system

If I buy a system now without the display, can it be added later ?

Yes.

If I already have a system, purchased before this announcement, can it be upgraded.

Yes.

All systems supplied by Vapourtec since 31st July 2009 can be easily upgraded by the user in situ. Older systems may need to be returned to Vapourtec for the upgrade.

How can I tell if my existing system is field upgradeable ?

Contact Vapourtec and quote the R2 or R2+ serial number. We'll tell you straight away.

I already have a system and a license for Flow Commander™. If I upgrade to the new display, will I need to re-purchase Flow Commander™ ?

No, your existing license will cover that.

Then will I still be able to use my original PC based Flow Commander™ in my office for editing experiments before moving them to the instrument ?

Yes. Each Flow Commander™ license is paired with a specific R2 or R2+ module.